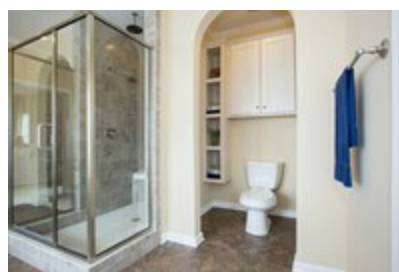




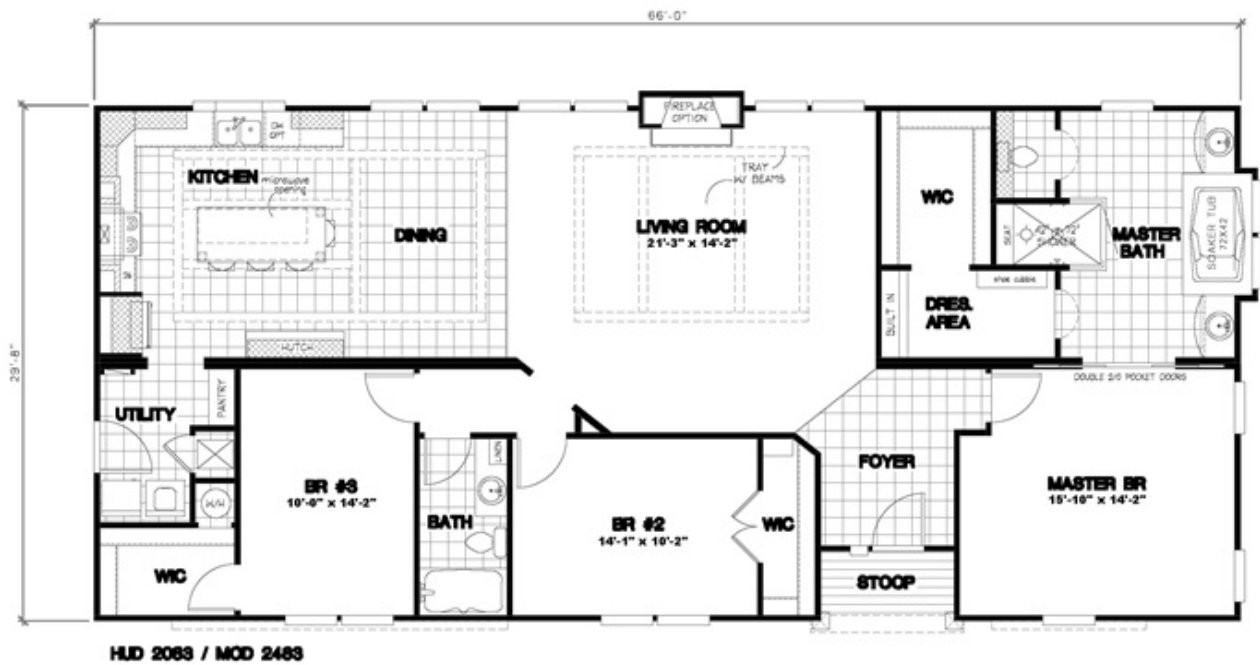
2483 66X32 CK3+2 HERITAGE MOD



2483 66X32 CK3+2 HERITAGE MOD

Floor plan number: RIC247631NCABM

3 beds • 2 baths • 2112 sq.ft. • 32' width • 66' depth



Our home building facilities invest in continuous product and process improvements. Plans, dimensions, features, materials, specifications and availability are subject to change without notice or obligation. Renderings and floor plans are representative likenesses of our homes and may differ from the actual homes. We invite you to tour a Home Center near you and inspect the highest value in quality housing available or call (910) 641-0100 to speak with a Home Consultant. Copyright 2017, CMH. All rights reserved.

CLAYTON HOMES-WHITEVILLE

1233 J.K. POWELL BLVD
WHITEVILLE, NC 28472

Monday - Thursday: 9am - 7pm
Friday: 9am - 6pm
Saturday: 9am - 5pm
Sunday: Closed

(910) 641-0100